

PROJETO BÁSICO PARA REFORMA E AMPLIAÇÃO DA UBS PEDRO LEME



Préfectura Municipal de Rosario
Praga Santana, 201 - Centro - CEP 12580-000 - Rosario - SP - Tel.(12) 3646-9900 - Tel (12) 3646 9901

DATA

setembro / 2019

ESCALA 1:100

FOLHA



Rua Benedito Monteiro, n.º 197 - Pedro Leme - Roseira/SP

Thays Caroline Vieira de Campos

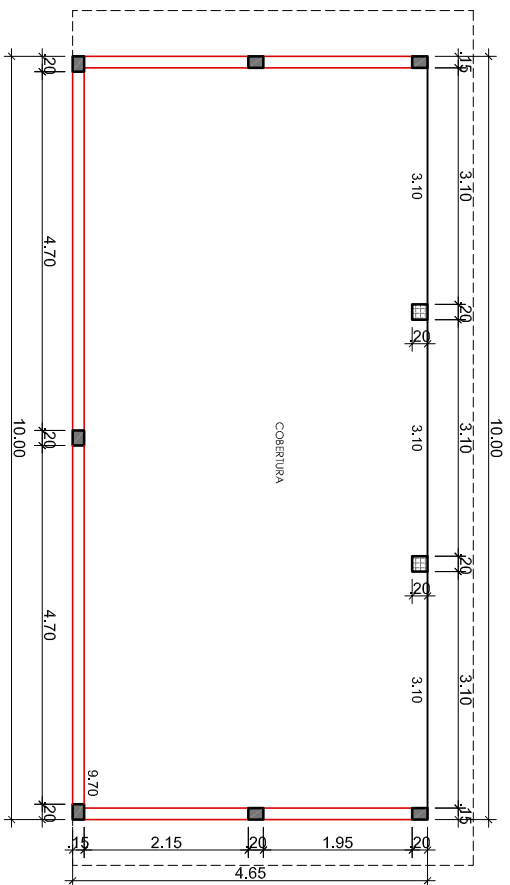
Arquiteta e Urbanista CAU 188134-5

Edgard Vilela Rodrigues Neto

Arquiteto e Urbanista CAU A40364--

Jonas Polydoro

Prefeito Municipal

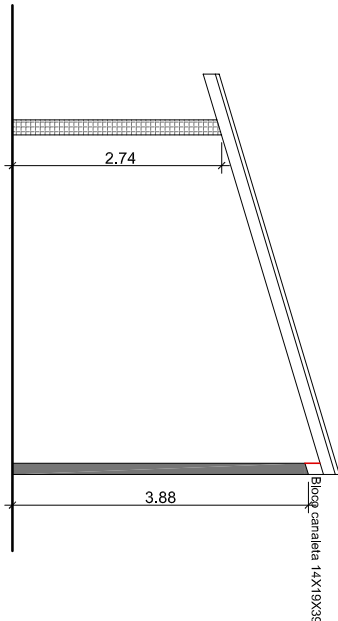


ESTRUTURAL PILARES

ESCALA 1:150

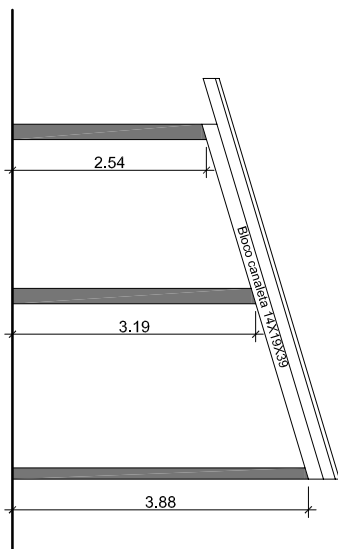
LEGENDA:

- PILAR A CONSTRUIR 15x20 cm
- PILAR A CONSTRUIR 20x20 cm



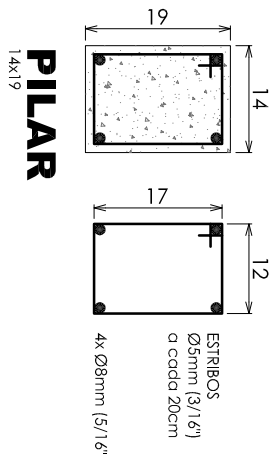
PERFIL PILARES CENTRAIS

ESCALA 1:150



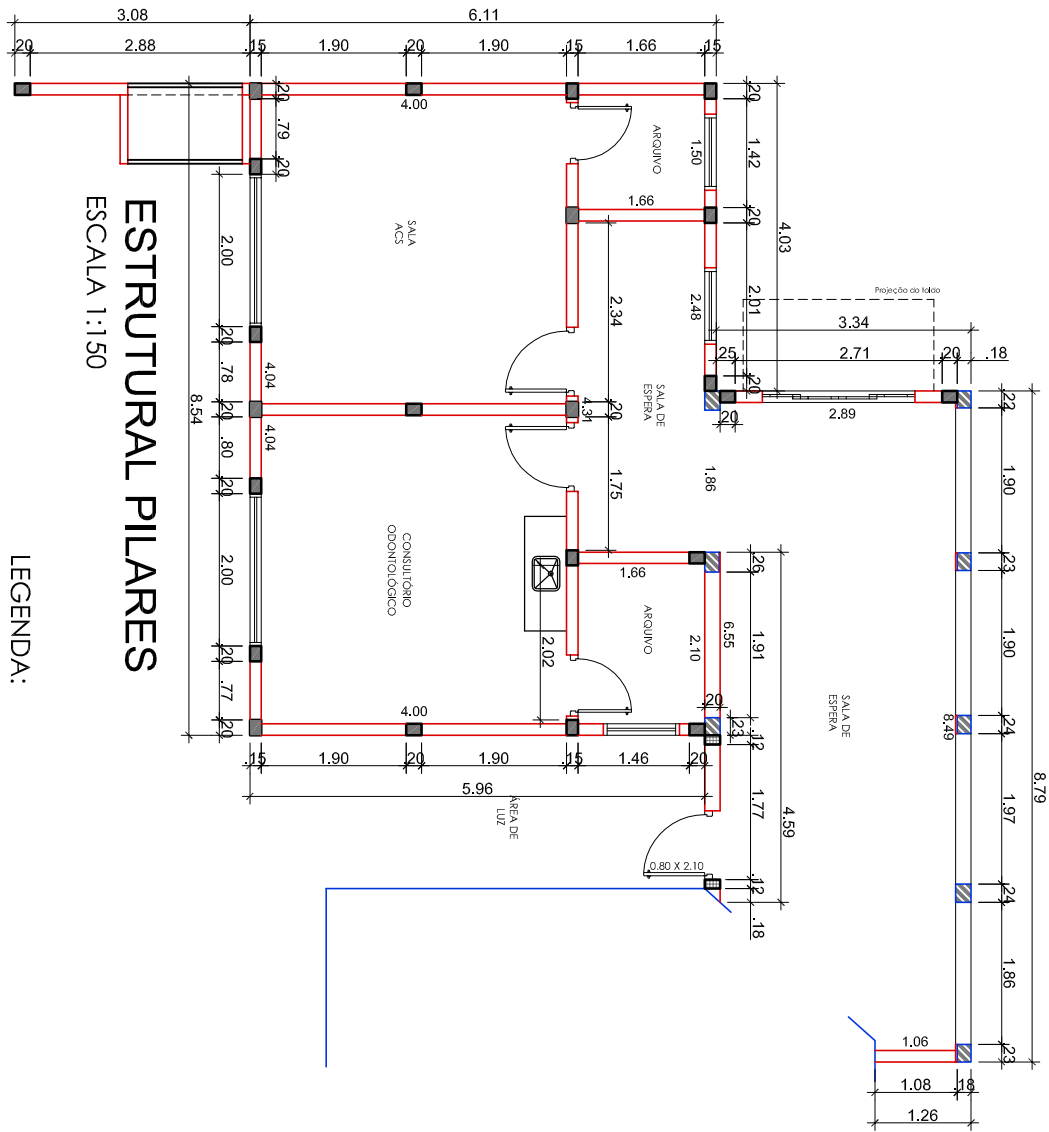
PERFIL PILARES LATERAIS

ESCALA 1:150



PILAR
14x19

14x19

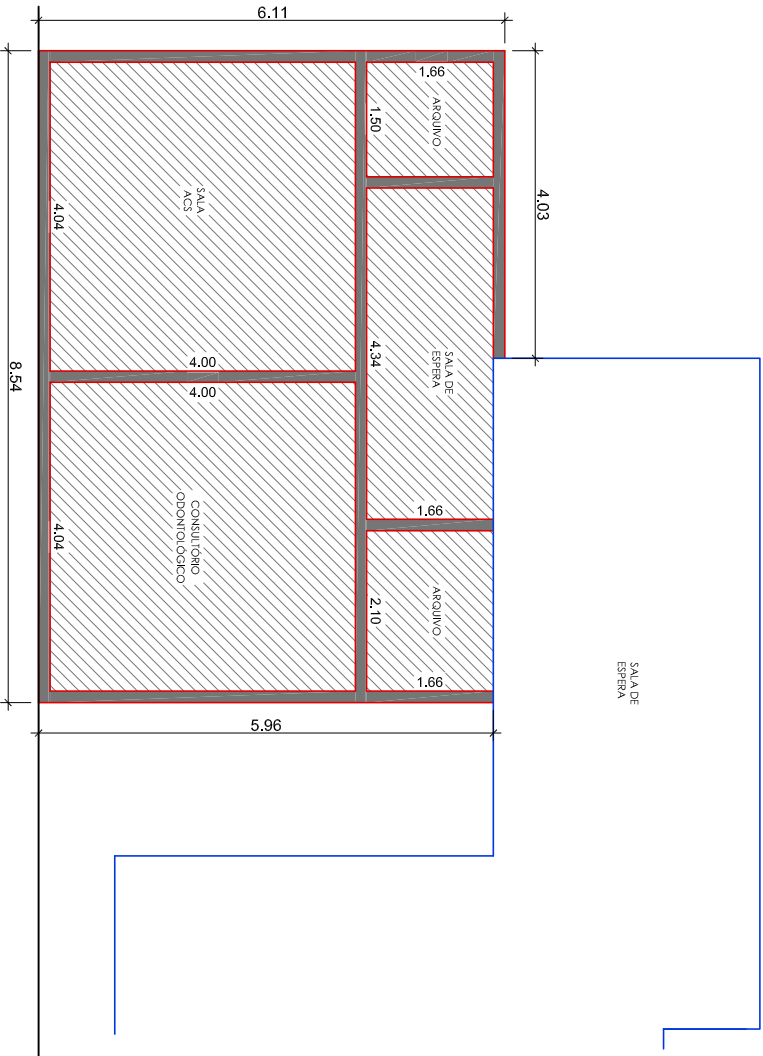


ESTRUTURAL PILARES

ESCALA 1:150

LEGENDA:

- ☒ PILAR EXISTENTE
- ☐ PILAR A CONSTRUIR 15x20 cm
- ☐ PILAR A CONSTRUIR 12x20 cm

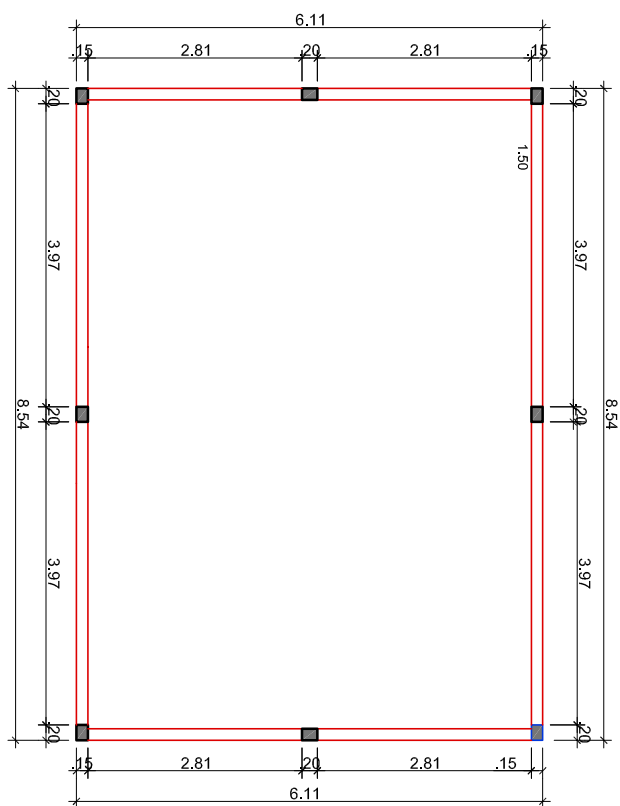


LAJE PRÉ FABRICADA 0,16 h E VIGA 0,14 X 0,30 h

ESCALA 1:150

LEGENDA

- ☒ LAJE 0,16 h
- ☐ VIGA 0,14 X 0,30 h



ESTRUTURAL PILARES PLATIBANDA

ESCALA 1:100

LEGENDA:

- PILAR A CONSTRUIR 15x20 cm h 0,60 cm